



TM
DE DYNAMIC
Process Equipment

Static Electrode Fitting
SmartDip 150 / 155

SmartDip 150 & 155: Static Electrode Fitting

SmartDip 150 is a static electrode housing with Triclover Fitting (ISO standard DN25/32 and DIN standard DN25/32/40) for process connection. This metal body model can be implemented in vessels and equipment used in various food, beverages and dairy processing industries. ISO standard DN40 and DIN standard DN50 size is available with model SmartDip 155. You can choose between 45mm and 80mm immersion length in both the models.

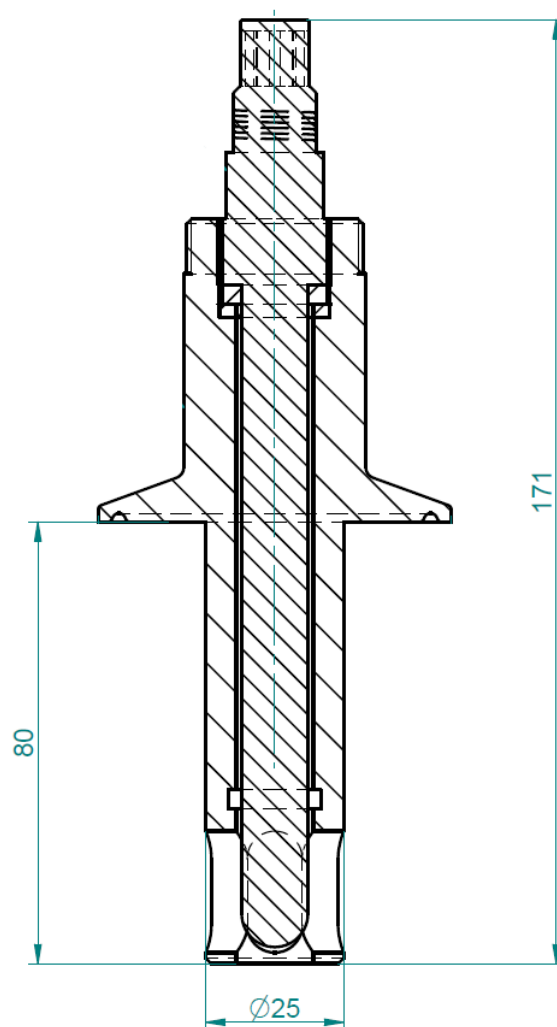
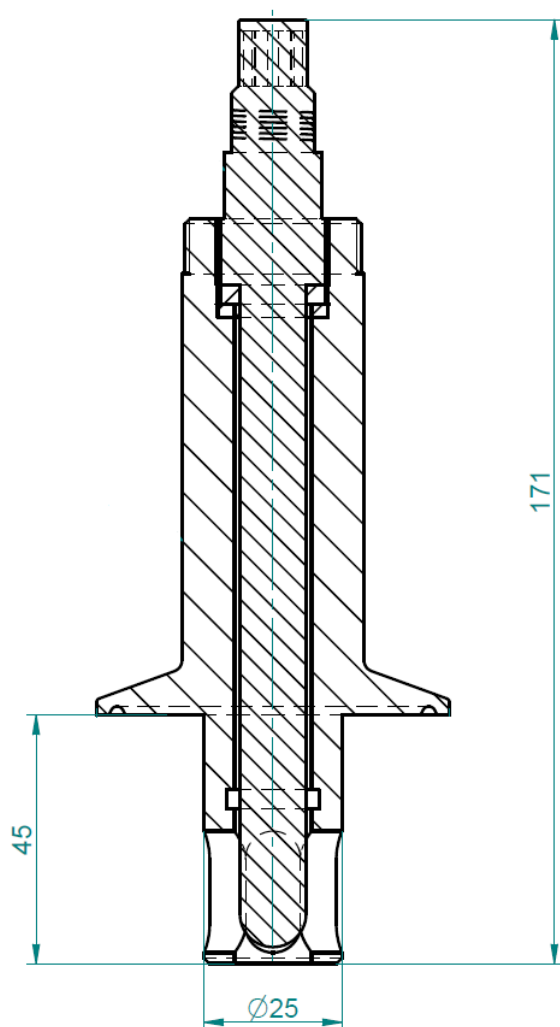
About Product:

- Impeccable machine finished body with MOC SS 316L
- Designed for sensor tip protection against abrasion and damage
- Various sealing material available such as EPDM, VITON, KALREZ.
- Process Connection: ISO DN25/32/40 and DIN DN25/32/40/50 Triclover Fitting
- Immersion length: 45mm and 80mm
- Sensor Specification: 120mm ø12 PG13.5 Sensor
- Surface finish Ra value < 0.3



Specification Sheet:

Model	SmartDip 150	SmartDip 155
Pressure	0 to 10 Bar	
Process Temperature	up to 140 °C	
pH/DO Sensor Specs	120mm ø12 PG13.5	
Wetted Material	SS316L	
Seals	EPDM, FPM (Viton), FFKM (Kalrez)	
Process Connection	ISO DN25/32 DIN DN25/32/40	ISO DN40 DIN DN50
Surface Finish	Ra Value <0.3	
Immersion Length	45mm & 80mm	



Application:

- Bio-Pharma
- Food & Beverages
- Dairy Industry

Ordering Information:

SmartDip 150	_Code	MOC of Wetted Parts		
SmartDip 155				
	1	316L		
		_code	MOC of Seals	
		EP	EPDM	
		VI	VITON (FPM)	
		FK	FFKM (Kalrez)	
			_Code	Immersion Length
			45	45mm Immersion
			80	80mm Immersion

Also check out our range of **Retractable Housings** for Liquid Analytics...



SmartDip 405M

SmartDip 405M is a retractable electrode housing with pneumatically operated drive Unit. This metal body model can be implemented in harsh chemical applications through flan...



SmartDip 220M

SmartDip 220M is a compact retractable electrode housing with manual drive Unit. This metal body model can be implemented in different chemical applications including ferment...



SmartDip 405P

SmartDip 405P is a retractable electrode housing with pneumatically operated drive Unit. This plastic body model can be implemented in harsh chemical applications through flan...



SmartDip 250M

SmartDip 250M is a manually operated Retractable electrode housing with long immersion lengths and ball valve for isolation. It can fit 120mm long Sensor.



SmartDip 420M

SmartDip 420M is a compact retractable electrode housing with pneumatically operated drive Unit. This metal body model can be implemented in different chemical applicatio...



SmartDip 240M

SmartDip 240M is a compact retractable electrode housing. This version can fit 120mm long sensor. It comes with 1" NPT, Triclover connection.



SmartDip 450M

SmartDip 450M is a pneumatically operated retractable electrode housing with long immersion length and isolation ball valve. This unique model can fit 120mm long sensor.